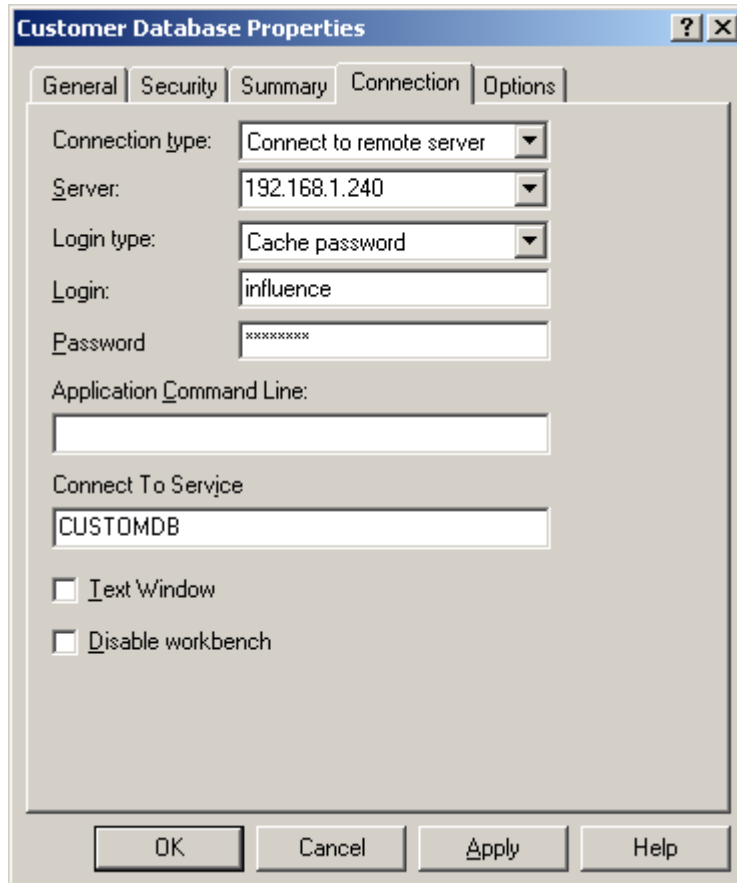


Installing KClient for Influence on a new PC

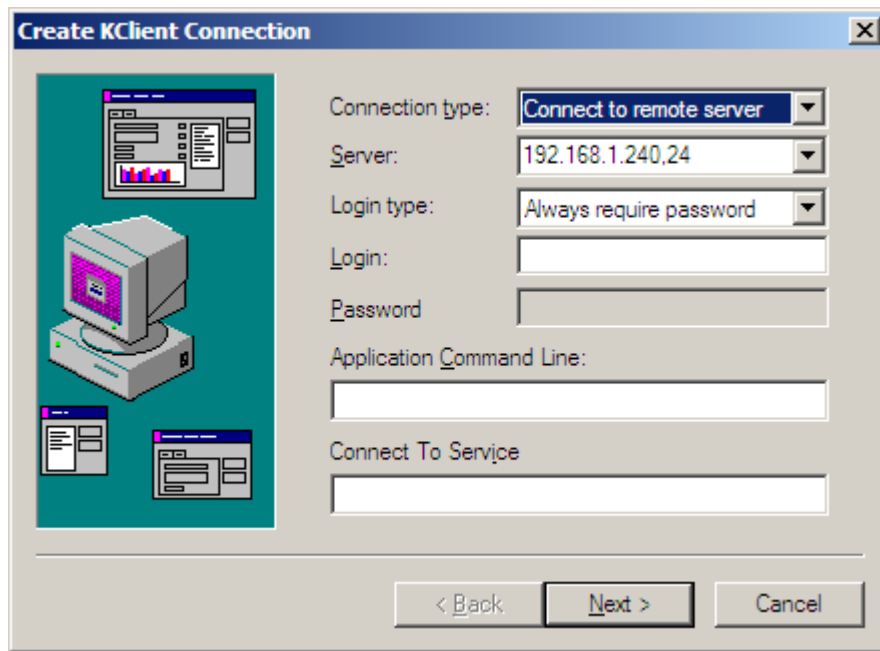
The KClient installation software can be found on the Influence server in ?:\Influence\Software\Kerridge\KClient. (where ? is the drive letter where KClient exists). The Software folder is often set up as shared, and you should, therefore, be able to access this via "My Network Places". There may be several setup files in this directory, you will need to select the latest one (i.e. the one with the highest number). Once installed, you can create an Influence Icon on your desktop, but before you start, it is a good idea to gather some information from an existing, working version from another PC. On that PC, right click on the Influence Icon and select properties. You will be presented with a window that looks like this:



Copy down the details in Server, Login and Connect to Service.

On the new PC, right click on the desktop, select New and then select KCML KClient. The following window will be displayed:

Installing KClient for Influence on a new PC



Connection type should always be "Connect to remote server"

Server is the server address that you copied down earlier.

Login type should always be "Cache Password"

Login is the Login that you copied down earlier.

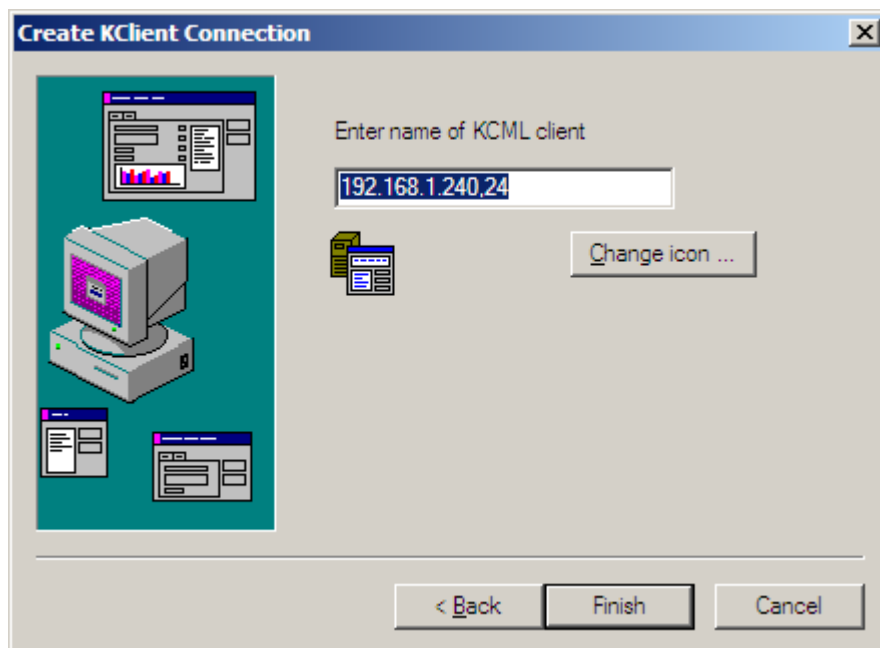
Leave password blank – this will be prompted for on first use of the Influence Icon in any case.

Leave Application Command Line blank.

Connect To Service is what you copied down earlier (if it was not blank).

NB – If there is no Connect to service, then the server id may end in ",23" - note that this is a comma, and not another full stop.

After pressing the Next button, the following will be displayed:



Installing KClient for Influence on a new PC

Change the name of the KCML client to Influence, and then press Finish.

You should now have a new Influence icon on your desktop. Double click on this, and a server login will be presented, with the Login filled in. You will need to enter the server password for that login ID.